

Bobcat of Knoxville – 2012 Rental Rates (10/11)

Call Scott Corliss @ (865) 588-8115 for monthly specials.

TIRE LOADERS	Width	Weight	HP	1/2	Day	Week	4-Week
S70 – w/ purifier	36"	2,708	22.5	\$104	\$139	\$480	\$1350
S100 – w /purifier	50"	4,110	25	\$109	\$145	\$520	\$1400
S130	62"	5,235	46	\$104	\$139	\$499	\$1350
S150	68"	5,935	46	\$108	\$145	\$520	\$1400
S160	68"	6,115	56	\$111	\$149	\$535	\$1450
S175	68"	6,220	46	\$116	\$155	\$555	\$1500
S185	68"	5,808	56	\$120	\$159	\$575	\$1550
S205	68"	6,655	61	\$129	\$169	\$610	\$1650
S220	74"	7,825	75	\$139	\$179	\$650	\$1750
S250 / S630 **	74"	7,723	75	\$149	\$189	\$685	\$1850
S300 / S650 **	74"	8,448	81	\$159	\$199	\$720	\$1950
S330 / S770 **	74"	9,185	85	\$169	\$215	\$760	\$2050
S850 **	79"	10,008	92	\$198	\$265	\$925	\$2645
For Foam Filled Tires			Add...	\$20	\$30	\$105	\$310
**A/C Cab Option			Add...	\$15	\$20	\$100	\$300



[Training Video](#)

HI- FLO LOADERS	Width	Weight	HP	1/2	Day	Week	4-Week
S250HCab / S630	74"	7,870	75	\$165	\$219	\$750	\$2150
S300HCab / S650	74"	8,140	81	\$172	\$229	\$790	\$2250
S330HCab	74"	9,185	85	\$180	\$239	\$820	\$2350
T300HCab	80"	9,354	81	\$255	\$339	\$1205	\$3350
T320HCab	80"	9,702	92	\$265	\$359	\$1305	\$3590
S330/T300 Forestry Package - (See Video)				\$479	\$639	\$2410	\$6389
Hi Flow Attach: Forestry Mulcher – 48-60"				\$224	\$300	\$1205	\$3039
Planner- 24" (Video)				\$185	\$245	\$925	\$2450
Stump Grinder - 26" head				\$112	\$149	\$520	\$1490
Wheel Saw - 2.5" w -18" d				\$185	\$245	\$925	\$2450



WHEEL SAW



PLANER

TRACK LOADERS	Width	Weight	HP	1/2	Day	Week	4-Week
T110	50"	5,202	41.8	\$149	\$189	\$685	\$1850
T140	56"	6,660	46	\$169	\$215	\$760	\$2050
T180 / T190 **	68"	7,612	61	\$180	\$240	\$870	\$2350
T250 / T630 **	80"	9,347	81	\$215	\$290	\$995	\$2845
T300 / T650 **	80"	9,354	81	\$229	\$305	\$1030	\$2945
T320 / T770 **	80"	9,702	92	\$244	\$325	\$1100	\$3150
T870 **	89"	12,678	99.2	\$275	\$365	\$1275	\$3645
**A/C Cab Option on Above			Add...	\$15	\$20	\$100	\$300



MINI TRACKS	Width	Weight	HP	1/2	Day	Week	4-Week
MT52	36"	2,506	18.8	\$86	\$115	\$405	\$1100
MT55	44"	2,692	23.5	\$94	\$125	\$445	\$1200
MT52 Attachments: Auger w/ Bit				\$59	\$79	\$275	\$785
Backhoe M06				\$59	\$69	\$240	\$690
Breaker (HB280) 150 lbs.				\$75	\$99	\$345	\$990
Forks				\$18	\$25	\$60	\$140
Grapple				\$50	\$69	\$210	\$600
Horizontal Bore				\$67	\$89	\$315	\$890
Platform (sulke)				\$3	\$5	\$15	\$30
Scraper-mini				\$40	\$55	\$195	\$555
Soil Conditioner 48"				\$50	\$69	\$240	\$690
Stump Grinder (SG30) - 18" head				\$66	\$89	\$276	\$790
Tiller 38"				\$59	\$79	\$245	\$700
Trencher LT112				\$44	\$59	\$205	\$587
Vibratory Plow				\$50	\$69	\$245	\$700



[Safety Videos](#)

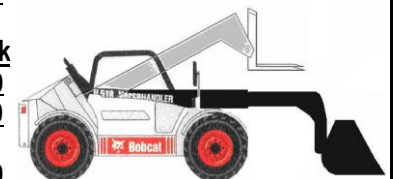


BORING UNIT



TRENCHER

VERSA HANDLER	Width	Weight	HP	1/2	Day	Week	4-Week
V518	78.2"	10,846	100	\$194	\$259	\$845	\$2280
Boom Truss				\$69	\$89	\$330	\$890
Bucket 80" (1 yard)				\$3	\$3	\$9	\$18
Grapple (Industrial)				\$69	\$89	\$330	\$890
Forks (Versa)				\$25	\$45	\$85	\$175



[Training Video](#)

LOADER ATTACHMENTS : (Picture Overview)	1/2	Day	Week	4-Week
Auger (only)	\$59	\$79	\$275	\$785
Auger Bit (only)	\$22	\$30	\$105	\$300
Auger Ext (2' or 4')	\$7	\$9	\$21	\$50
Backhoe 709 (Training Video)	\$75	\$99	\$346	\$955
Backhoe 8811	\$79	\$105	\$370	\$1055
Beak (jaw) Grapple	\$60	\$89	\$275	\$785
Boom- Telescopic (16')	\$56	\$75	\$275	\$750
Breaker 350 lbs. (See Video)	\$110	\$149	\$489	\$1390
Breaker 500 lbs. (Specs)	\$134	\$179	\$575	\$1590
Breaker 750 lbs.	\$169	\$229	\$780	\$2190
Brushcat (bush hog) 60" & 72"	\$139	\$189	\$661	\$1890
Bucket (extra) HD	\$18	\$25	\$75	\$150
Combination (4 in 1) Bucket 74"	\$60	\$79	\$275	\$785
Concrete Bucket 1/2 yrd.	\$48	\$65	\$230	\$650
Dumping Hopper 50 cu ft.	\$50	\$69	\$240	\$690
Foam Filled Tires	\$25	\$30	\$105	\$310
Forks (Pallet)	\$25	\$35	\$75	\$150
Grapple -Industrial 66" or Root Claw	\$66	\$89	\$275	\$785
Grapple -Industrial 74" or Root Claw	\$74	\$99	\$295	\$845
Harley Rake MX6 72" (Soil Conditioner)	\$86	\$115	\$405	\$1155
Harley Rake MX7 84"	\$95	\$125	\$445	\$1255
Landplane / Eliminator Rake	\$45	\$60	\$220	\$600
Post Driver 9000	\$125	\$189	\$661	\$1890
Purifier - air	\$15	\$20	\$75	\$200
Roller Vibratory / Tamper	\$110	\$145	\$505	\$1450
Rock hound / 5B Rake 60"	\$85	\$109	\$380	\$1085
Rock hound / 6B Rake 72"	\$92	\$119	\$425	\$1185
Seeder 72"	\$95	\$125	\$440	\$1240
Sweeper w/ Pickup 60"	\$66	\$89	\$295	\$845
Sweeper Angle Broom or 72" w / PU	\$70	\$95	\$315	\$895
Trencher	\$75	\$99	\$355	\$990



AUGER



BACKHOE



BREAKER



BRUSHCAT ROTARY CUTTER

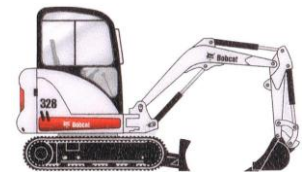


GRAPPLE - INDUSTRIAL



LANDSCAPE RAKE

EXCAVATOR (Video)	Width	Weight	HP	1/2	Day	Week	4-Week
418 / 323	28" / 38.6"	3,526	10 / 13.3	\$134	\$179	\$650	\$1750
325 / 328	55"	6,145	27.7	\$141	\$189	\$685	\$1850
334 / E32 **	59.6"	7,858	33.3	\$161	\$215	\$760	\$2050
335 / E42 **	70.1"	9,170	40	\$199	\$265	\$890	\$2550
341 / E50 **	74.8"	11,660	48	\$221	\$299	\$1009	\$2850
425 Z/T	60.6"	5,849	26.4	\$141	\$189	\$685	\$1850
430 Z/T / E35 **	70" / 69"	8,024	42.8 / 33.3	\$172	\$230	\$835	\$2250
435 Z/T / E45 **	76"	10,555	49	\$214	\$285	\$980	\$2650
E60 M/T	78"	13,556	52.3	\$280	\$375	\$1125	\$3375
E80 M/T	91"	18,689	57	\$375	\$435	\$1552	\$4450



[Training Video](#)

**A/C Cab Option on Above Add... \$15 \$20 \$100 \$300

EXCAVATOR ATTACHMENTS (Excavator- Historical Specs)	1/2	Day	Week	4-Week
Auger w/ Bit	\$72	\$109	\$380	\$1085
Breaker 350 lbs.	\$110	\$149	\$489	\$1390
Breaker 500 lbs.	\$134	\$179	\$575	\$1590
Breaker 750 lbs.	\$169	\$229	\$780	\$2190
Breaker 1000 lbs. (Rammer Specs)	\$210	\$289	\$979	\$2650
Thumb-clamp	\$15	\$25	\$85	\$250



AUGER



MISCELLANEOUS ITEMS:	1/2	Day	Week	4-Week
Tractor CT235 (35 HP) Lifts 1500 lbs.	\$139	\$185	\$649	\$1620
Trailer w/ Equip	\$29	\$39	\$129	\$390
Trailer w/o Equip	\$59	\$79	\$276	\$790
Rental Ball	\$4	\$6	\$8	\$10
Rental Light Adaptor	\$2	\$4	\$6	\$7
Rental Grease Gun	\$3	\$5	\$7	\$8
Roller S/F (SD25D) or Smooth Drum (BCA12)	\$149	\$195	\$649	\$1850
Utility Vehicle (2-seat 4-WD) 3400 Diesel	\$66	\$89	\$315	\$850
Utility Vehicle (4-seat 4-WD) 3400XL Gas	\$78	\$105	\$368	\$1050



Add 10% Damage Waiver on the above rental rates. [\(See Safety / Training Videos\)](#)